



**REGIONAL SPECIALISED METEOROLOGICAL CENTRE-TROPICAL CYCLONES, NEW DELHI
SPECIAL TROPICAL CYCLONE ADVISORY**

DEMS-RSMC SPECIAL TROPICAL CYCLONES NEW DELHI DATED 27.05.2024

FROM: RSMC –TROPICAL CYCLONES, NEW DELHI

TO:

**STORM WARNING CENTRE, NAYPYI TAW (MYANMAR)
STORM WARNING CENTRE, BANGKOK (THAILAND)
STORM WARNING CENTRE, COLOMBO (SRILANKA)
STORM WARNING CENTRE, DHAKA (BANGLADESH)
STORM WARNING CENTRE, KARACHI (PAKISTAN)
METEOROLOGICAL OFFICE, MALE (MALDIVES)
OMAN METEOROLOGICAL DEPARTMENT,
MUSCAT (THROUGH RTH JEDDAH)
YEMEN METEOROLOGICAL SERVICES,
REPUBLIC OF YEMEN (THROUGH RTH JEDDAH)
NATIONAL CENTRE FOR METEOROLOGY, UAE (THROUGH RTH JEDDAH)
PRESIDENCY OF METEOROLOGY AND ENVIRONMENT,
SAUDI ARABIA (THROUGH RTH JEDDAH)
IRAN METEOROLOGICAL ORGANISATION, (THROUGH RTH JEDDAH)
QATAR METEOROLOGICAL DEPARTMENT (THROUGH RTH JEDDAH)**

SPECIAL TROPICAL CYCLONE ADVISORY FOR NORTH INDIAN OCEAN (THE BAY OF BENGAL AND ARABIAN SEA) VALID FOR NEXT 120 HOURS ISSUED AT 2000 UTC OF 27.05.2024 BASED ON 1800 UTC OF 27.05.2024

SUB: A DEEP DEPRESSION OVER BANGLADESH (REMNANT OF CYCLONIC STORM “REMAL”)

THE DEEP DEPRESSION (REMNANT OF CYCLONIC STORM “REMAL”) OVER BANGLADESH MOVED EAST-NORTHEASTWARDS WITH A SPEED OF 15 KMPH DURING PAST 06 HOURS, AND LAY CENTERED AT 1800 UTC OF 27TH MAY, 2024 OVER BANGLADESH, NEAR LATITUDE 24.0 °N AND LONGITUDE 90.5 °E ABOUT 190 KM NORTH-NORTHEAST OF MONGLA (41958, BANGLADESH), 120 KM WEST-SOUTHWEST OF SRIMANGAL (41915, BANGLADESH) AND 30 KM NORTHEAST OF DHAKA (41923, BANGLADESH).

THE SYSTEM IS LIKELY TO MOVE EAST-NORTHEASTWARDS, AND GRADUALLY WEAKEN INTO A DEPRESSION DURING NEXT 06 HOURS.

FORECAST TRACK AND INTENSITY ARE GIVEN IN THE FOLLOWING TABLE:

DATE/TIME (UTC)	POSITION (LAT. °N/ LONG. °E)	MAXIMUM SUSTAINED SURFACE WIND SPEED (KMPH)	CATEGORY OF CYCLONIC DISTURBANCE
27.05.24/1800	24.0/90.5	50-60 GUSTING TO 70	DEEP DEPRESSION
28.05.24/0000	24.4/91.1	40-50 GUSTING TO 65	DEPRESSION
28.05.24/0600	24.8/91.8	25-35 GUSTING TO 45	WELL MARKED LOW PRESSURE AREA

Cloud distribution: (a) Isolated: <25%, Scattered:25-50%, Broken: 51-75%, Solid:>75%, Convection Intensity: (a) Weak: Cloud Top Temperature (CTT) >-25°C, (b) Moderate: CTT: - 25°C to -40°C, (c) Intense: CTT: - 41°C to -70°C and (d) Very Intense: : Less than -70°C
PROBABILITY OF CYCLOGENESIS (FORMATION OF DEPRESSION):NIL: 0%, LOW: 1-33%, , MODERATE: 34-66% AND HIGH: 67-100%
This is a guidance Bulletin for WMO/ESCAP Panel Member countries. Visit respective National websites for Country specific Bulletins

THE LATEST SATELLITE IMAGERY INDICATES THAT CONVECTION HAS GOT DISORGANIZED AND REDUCED IN TERMS OF SIZE & DEPTH. ALSO, THERE IS NO COLD AIR ADVECTION INTO THE CORE OF THE SYSTEM. ASSOCIATED SCATTERED TO BROKEN LOW/MEDIUM CLOUDS WITH EMBEDDED INTENSE TO VERY INTENSE CONVECTION OVER NORTH BAY OF BENGAL, SOUTH EASTERN PARTS OF ASSAM, MANIPUR, MIZZROME, EAST BANGLADESH, (CLOUD TOP TEMPERATURE IS -85 TO -93 DEG CEL) AND MODERATE TO INTENSE CONVECTION OVER EAST SOUTH OF GANGETIC WEST BENGAL, NORTH EASTERN STATES OF INDIA (CLOUD TOP TEMPERATURE IS -55 TO -65 DEG CEL). SCATTERED LOW/MED CLOUDS WITH EMBEDDED MODERATE TO INTENSE CONVECTION OVER CENTRAL BAY OF BENGAL NORTH ANDAMAN SEA & GULF OF MARTABAN AND ISOLATED WEAK TO MODERATE CONVECTION OVER SOUTH BAY OF BENGAL.

AS PER LATEST OBSERVATIONS, ESTIMATED CENTRAL PRESSURE IS 986.0 HPA AT 1800 UTC OF 27TH MAY. ESTIMATED MAXIMUM SUSTAINED WIND SPEED IS 35 KNOTS GUSTING TO 45 KNOTS. A STATION IN BANGLADESH (41929) REPORTED LOWEST PRESSURE OF 985.4 HPA. PRESSURE OF OUTERMOST CLOSED ISOBAR IS 992 HPA.

WIND WARNING:

WIND WARNING:

(A) BAY OF BENGAL

❖ **SQUALLY WIND SPEED REACHING 50-60 KMPH GUSTING TO 70 KMPH** VERY LIKELY TO PREVAIL OVER NORTH BAY OF BENGAL TILL 0000 UTC OF 28TH AND THEREAFTER VERY LIKELY TO DECREASE AND BECOMING 40-50 KMPH GUSTING TO 60 KMPH TILL 0600 UTC OF 28TH MAY.

(B) ALONG & OFF BANGLADESH AND WEST BENGAL COASTS

❖ **SQUALLY WIND SPEED REACHING 40-50 KMPH GUSTING TO 60 KMPH** VERY LIKELY TO PREVAIL TILL 0000 UTC OF 28TH MAY AND DECREASE THEREAFTER.

(C) NORTHEASTERN STATES

SQUALLY WIND SPEED REACHING 50-60 KMPH GUSTING TO 70 KMPH IS LIKELY OVER SOUTH ASSAM AND MEGHALAYA, TRIPURA AND **40-50 KMPH GUSTING TO 60 KMPH** IS LIKELY OVER & MIZORAM, MANIPUR AND REMAINING PARTS OF ASSAM TILL 0000 UTC OF 28TH AND THEREAFTER VERY LIKELY TO DECREASE AND BECOMING 40-50 KMPH GUSTING TO 60 KMPH OVER ASSAM, MEGHALAYA & TRIPURA TILL 0600 UTC OF 28TH MAY 2024.

SEA CONDITION WARNING:

(A) NORTH BAY OF BENGAL, ALONG & OFF BANGLADESH AND WEST BENGAL COASTS

ROUGH SEA CONDITION VERY LIKELY OVER NORTH BAY OF BENGAL, ALONG & OFF BANGLADESH AND WEST BENGAL COASTS TILL 0000 UTC OF 28TH MAY AND IMPROVE THEREAFTER.

REMARKS:

CURRENT ENVIRONMENTAL CONDITIONS INDICATE THAT SYSTEM LEADING TO SLOW WEAKENING OF THE SYSTEM. LOW LEVEL VORTICITY IS ABOUT 50-100 X10⁻⁵S⁻¹ OVER NORTH BAY OF BENGAL & ADJOINING COASTAL BANGLADESH TO THE SOUTH OF SYSTEM CENTRE, WITH VERTICAL EXTENSION UPTO 200 HPA LEVEL. LOW LEVEL CONVERGENCE IS ABOUT 50X10⁻⁵ S⁻¹ TO THE SOUTH OF THE SYSTEM CENTER. UPPER-LEVEL DIVERGENCE IS ABOUT 30X10⁻⁵S⁻¹ NEAR SYSTEM CENTRE. VERTICAL WIND SHEAR (VWS) IS LOW (05-10 KT) ALONG THE FORECAST TRACK.

THE SYSTEM IS LYING NOW MOVING AWAY FROM THE RIDGE AT AROUND 21.5N. THE SYSTEM HAS MOVED NORTHEASTWARDS. AS IT MOVES FURTHER NORTHEASTWARDS, THE MOIST AIR ADVECTION INTO THE CORE WILL DECREASE AND THE SYSTEM WOULD WEAKEN GRADUALLY BY 0000 UTC OF TOMORROW.

IN VIEW OF ALL THE ABOVE, THE DEEP DEPRESSION (REMNANT OF CYCLONIC STORM "REMA") OVER BANGLADESH MOVED EAST-NORTHEASTWARDS WITH A SPEED OF 15 KMPH DURING PAST 06 HOURS, AND LAY CENTERED AT 1800 UTC OF 27TH MAY, 2024 OVER BANGLADESH, NEAR LATITUDE 24.0 °N AND LONGITUDE 90.5 °E ABOUT 190 KM NORTH-NORTHEAST OF MONGLA (41958, BANGLADESH), 120 KM WEST-SOUTHWEST OF SRIMANGAL (41915, BANGLADESH) AND 30 KM NORTHEAST OF DHAKA (41923, BANGLADESH).

THE SYSTEM IS LIKELY TO MOVE EAST-NORTHEASTWARDS, AND GRADUALLY WEAKEN INTO A DEPRESSION DURING NEXT 06 HOURS.

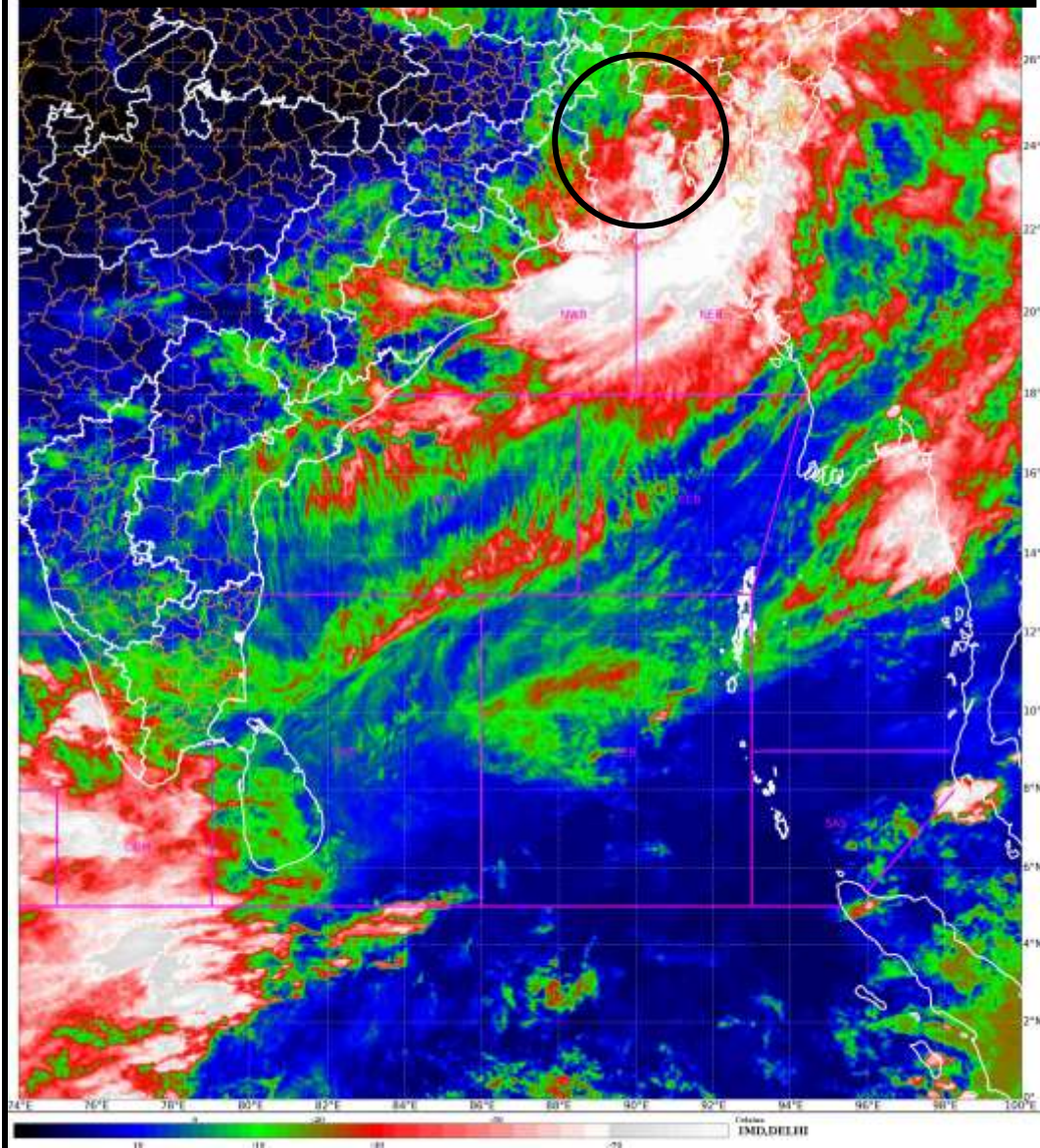
ARULALAN T
SCIENTIST C
RSMC NEW DELHI

SAT : INSAT-3D IMG
IMG_TIR1_TEMP 10.8 um
LIC Mercator

27-05-2024/(1800 to 1826) GMT
27-05-2024/(2330 to 2356) IST



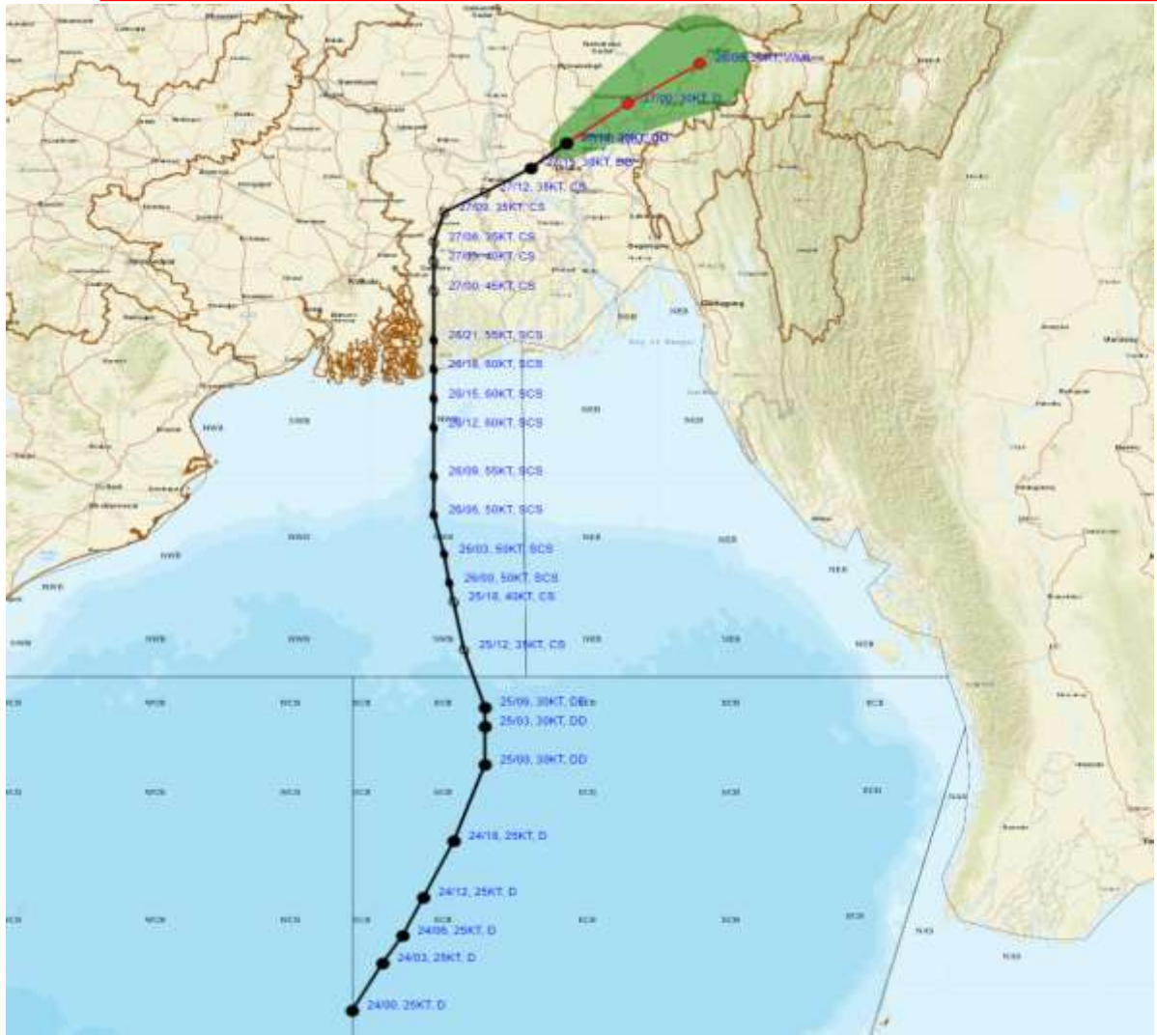
DEEP DEPRESSION 24.0 °N/90.5 °E



Cloud distribution: (a) Isolated: <25%, Scattered:25-50%, Broken: 51-75%, Solid:>75%, Convection Intensity: (a) Weak: Cloud Top Temperature (CTT) >-25°C, (b) Moderate: CTT: - 25°C to -40°C, (c) Intense: CTT: - 41°C to -70°C and (d) Very Intense: : Less than -70°C
PROBABILITY OF CYCLOGENESIS (FORMATION OF DEPRESSION):NIL: 0%, LOW: 1-33%, , MODERATE: 34-66% AND HIGH: 67-100%
This is a guidance Bulletin for WMO/ESCAP Panel Member countries. Visit respective National websites for Country specific Bulletins



FORECAST TRACK ALONGWITH CONE OF UNCERTAINTY IN ASSOCIATION WITH DEEP DEPRESSION (REMANANT OF CYCLONIC STORM 'REMAL') OVER BANGLADESH BASED ON 1800 UTC (2330 IST) OF 27TH MAY 2024.



DATE/TIME IN UTC

IST=UTC + 0530

L: LOW PRESSURE AREA

WML: WELL MARKED LOW PRESSURE AREA

D: DEPRESSION (17-27 KT)

DD: DEEP DEPRESSION (28-33 KT)

CS: CYCLONIC STORM (34-47 KT)

SCS: SEVERE CYCLONIC STORM (48-63KT)

VSCS: VERY SEVERE CYCLONIC STORM (64-89 KT)

ESCS: EXTREMELY SEVERE CYCLONIC STORM (90-119 KT)

SuCS: SUPER CYCLONIC STORM (≥ 120 KT)

● LESS THAN 34 KT

○ 34-47 KT

⊙ ≥ 48 KT

— OBSERVED TRACK

— FORECAST TRACK

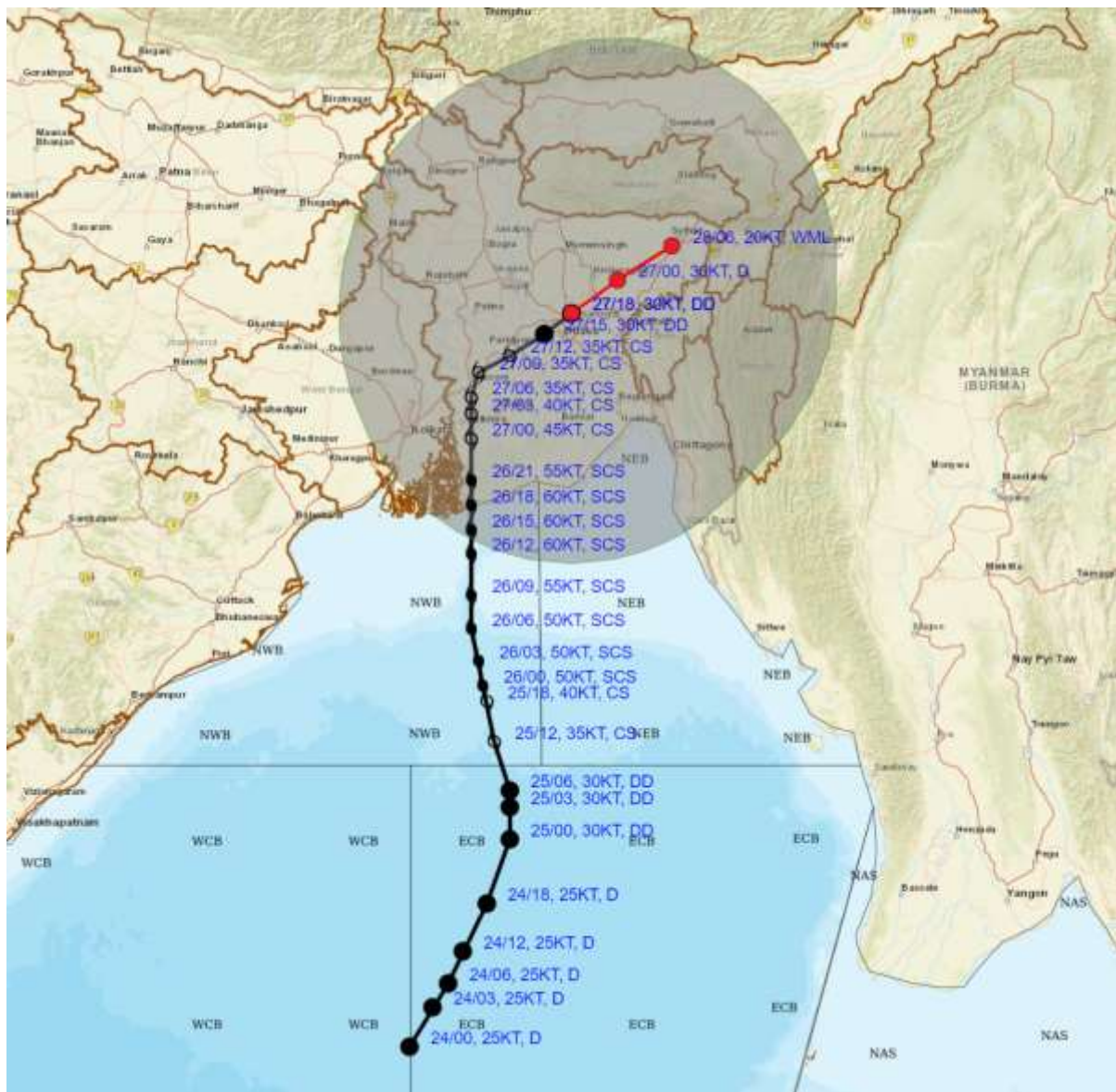
▲ CONE OF UNCERTAINTY

Forecast	DISTANCE (KM) AND DIRECTION FROM STATIONS		
Date and Time (UTC)	SRIMANGAL	Dhaka	Mongla
27.05.24/1800	120, WSW	30, NE	190, NNE
27.05.24/0000	70, W	110, NE	260, NE
28.05.24/0600	60, N	200, NE	340, NE

Cloud distribution: (a) Isolated: <25%, Scattered:25-50%, Broken: 51-75%, Solid:>75%, Convection Intensity: (a) Weak: Cloud Top Temperature (CTT) >-25°C, (b) Moderate: CTT: - 25°C to -40°C, (c) Intense: CTT: - 41°C to -70°C and (d) Very Intense: : Less than -70°C
 PROBABILITY OF CYCLOGENESIS (FORMATION OF DEPRESSION):NIL: 0%, LOW: 1-33%, , MODERATE: 34-66% AND HIGH: 67-100%
 This is a guidance Bulletin for WMO/ESCAP Panel Member countries. Visit respective National websites for Country specific Bulletins



FORECAST TRACK ALONGWITH QUADRANT WIND DISTRIBUTION IN ASSOCIATION WITH DEEP DEPRESSION (REMANANT OF CYCLONIC STORM 'REMAL') OVER BANGLADESH BASED ON 1800 UTC (2330 IST) OF 27TH MAY 2024.



DATE/TIME IN UTC

IST=UTC + 0530

L: LOW PRESSURE AREA

WML: WELL MARKED LOW PRESSURE AREA

D: DEPRESSION (17-27 KT)

DD: DEEP DEPRESSION (28-33 KT)

CS: CYCLONIC STORM (34-47 KT)

SCS: SEVERE CYCLONIC STORM (48-63KT)

VSCS: VERY SEVERE CYCLONIC STORM (64-89 KT)

ESCS: EXTREMELY SEVERE CYCLONIC STORM (90-119 KT)

SuCS: SUPER CYCLONIC STORM (≥ 120 KT)

● LESS THAN 34 KT

○ 34-47 KT

⊙ ≥ 48 KT

— OBSERVED TRACK

— FORECAST TRACK

▲ CONE OF UNCERTAINTY

AREA OF MAXIMUM SUSTAINED WIND SPEED:

■ 28-33 KT (52-61 KMPH)

■ 34-49 KT (62-91 KMPH)

■ 50-63 KT (92-117 KMPH)

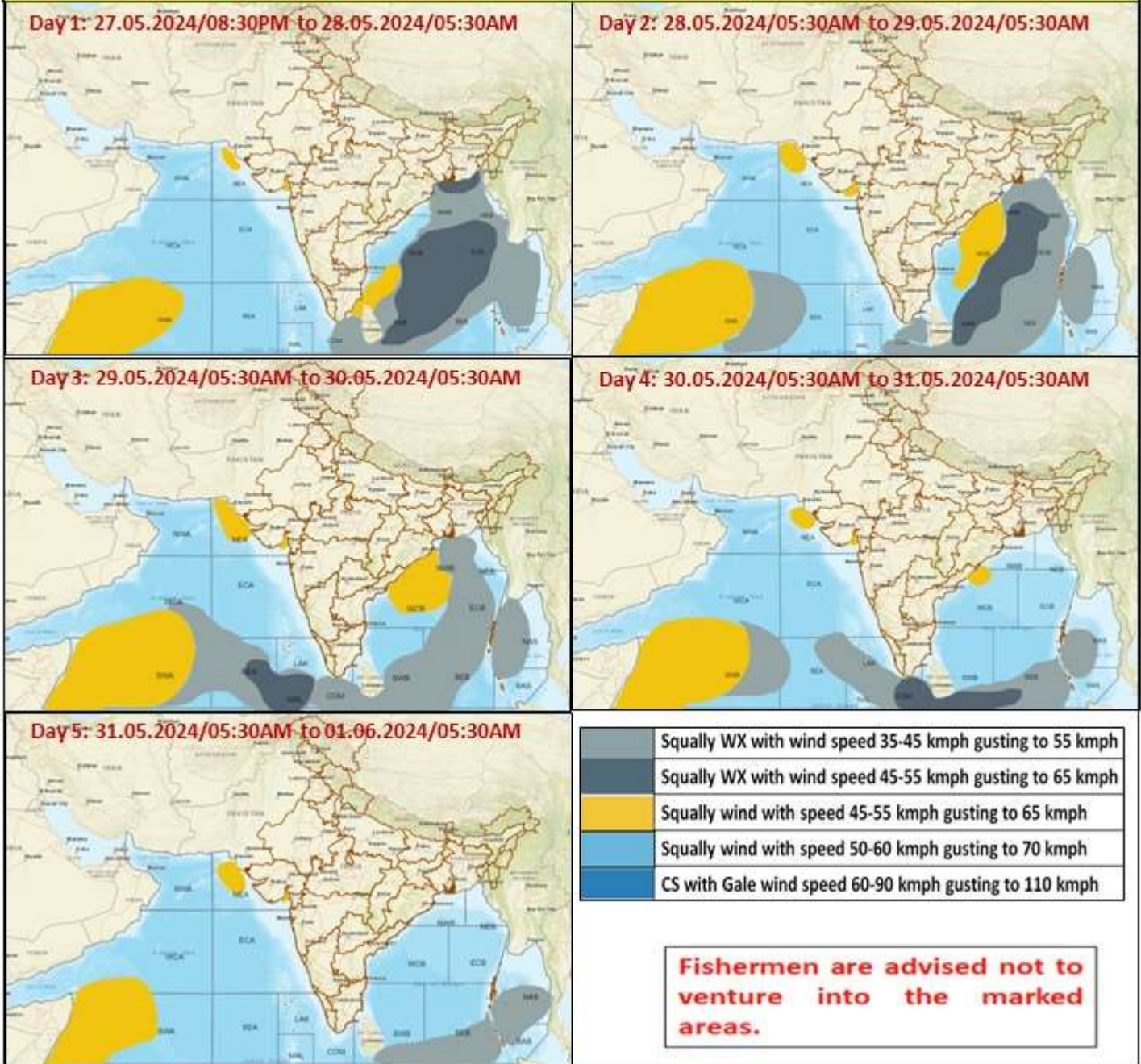
■ ≥ 64 KT (≥118 KMPH)

IMPACT OVER THE SEA

MSW (knot/kmph)	Impact	Action
28-33 (52-61)	Very rough seas	Total suspension of fishing operations
34-49 (62-91)	High to very high seas	Total suspension of fishing operations
50-63 (92-117)	Very high seas	Total suspension of fishing operations
≥ 64 (≥118)	Phenomenal	Total suspension of fishing operations

Cloud distribution: (a) Isolated: <25%, Scattered:25-50%, Broken: 51-75%, Solid:>75%, Convection Intensity: (a) Weak: Cloud Top Temperature (CTT) >-25°C, (b) Moderate: CTT: - 25°C to -40°C, (c) Intense: CTT: - 41°C to -70°C and (d) Very Intense: : Less than -70°C
PROBABILITY OF CYCLOGENESIS (FORMATION OF DEPRESSION):NIL: 0%, LOW: 1-33%, , MODERATE: 34-66% AND HIGH: 67-100%
 This is a guidance Bulletin for WMO/ESCAP Panel Member countries. Visit respective National websites for Country specific Bulletins

Fishermen Warning Graphics



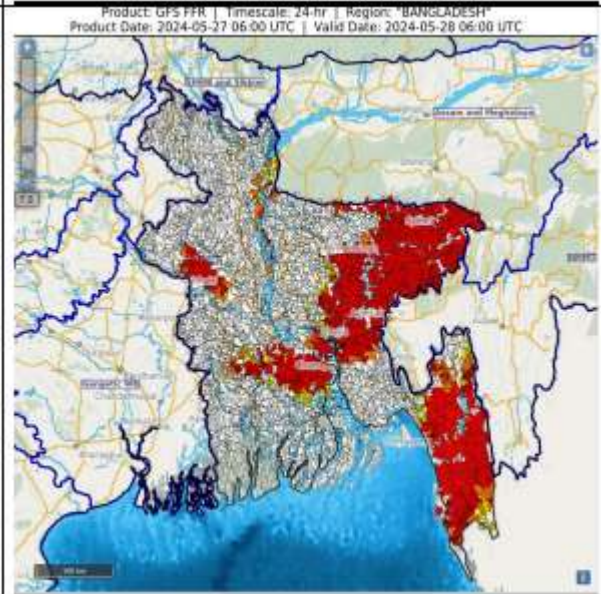
Cloud distribution: (a) Isolated: <25%, Scattered:25-50%, Broken: 51-75%, Solid:>75%, Convection Intensity: (a) Weak: Cloud Top Temperature (CTT) >-25°C, (b) Moderate: CTT: - 25°C to -40°C, (c) Intense: CTT: - 41°C to -70°C and (d) Very Intense: : Less than -70°C
 PROBABILITY OF CYCLOGENESIS (FORMATION OF DEPRESSION):NIL: 0%, LOW: 1-33%, , MODERATE: 34-66% AND HIGH: 67-100%
 This is a guidance Bulletin for WMO/ESCAP Panel Member countries. Visit respective National websites for Country specific Bulletins

FLASH FLOOD GUIDANCE FOR BANGLADESH

24 hours Flash Flood Risk Outlook till 0600 UTC of 28.05.2024:

Moderate flash flood risk likely over Bangladesh for next 24 hours.

Surface runoff/ Inundation may occur on low lying areas due to persistent rainfall under the influence of impending Cyclonic Storm "Remal" in next 24 hours.

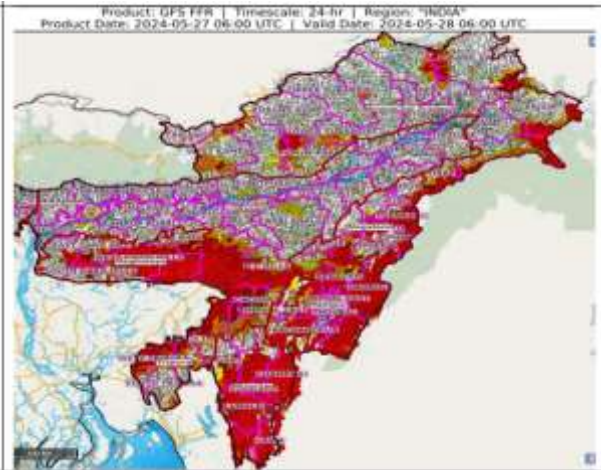


Flash Flood Guidance for Northeastern States

24 hours Outlook for the Flash Flood Risk (FFR) till 1130 IST of 28-05-2024 :

Moderate flash flood risk likely over few watersheds & neighbourhoods of Arunachal Pradesh, Assam & Meghalaya and NMMT Met Sub-divisions during next 24 hours.

Surface runoff/ Inundation may occur on low lying areas due to persistent rainfall under the influence of impending Cyclonic Storm "Remal" in next 24 hours.



Flash Flood Threat	Flash Flood Risk
 High Threat (Take Action)	 High Risk (Take Action)
 Moderate threat (Be Prepared)	 Moderate Risk (Be Prepared)
 Low Threat (Be Updated)	 Low Risk (Be Updated)